



Instructions For POP UP BANNERS

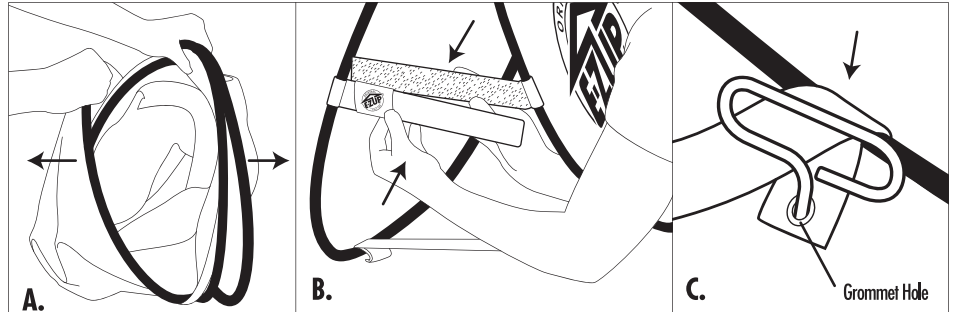
What's included: (1) POP UP Banner, (4) Stakes & (1) Storage Bag

POP UP BANNER ASSEMBLY

A. Remove Pop Up Banner from the Storage Bag. At arm's length, firmly hold onto the edges of the banner and slowly to open.
Caution: The Banner will spring open quickly.

B. Locate the support bars on each short end and press together to fasten.

C. For outdoor use or for soft surfaces, insert the stakes included, through the grommet holes on all four tabs.



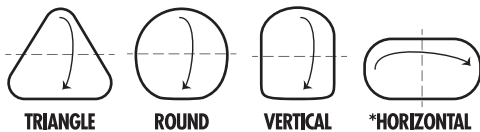
POP UP BANNER TAKE DOWN

If secured outdoors, remove the stakes and place in the storage bag.

D. Unfasten the support bars and make sure they fold inside the banner.

E. Flatten the banner and stand it in a vertical position as shown. It's **important** to view the diagram below and identify the correct folding direction for your specific Pop-Up Banner.

FOLD TOP TO BOTTOM ACROSS THE DOTTED LINE:

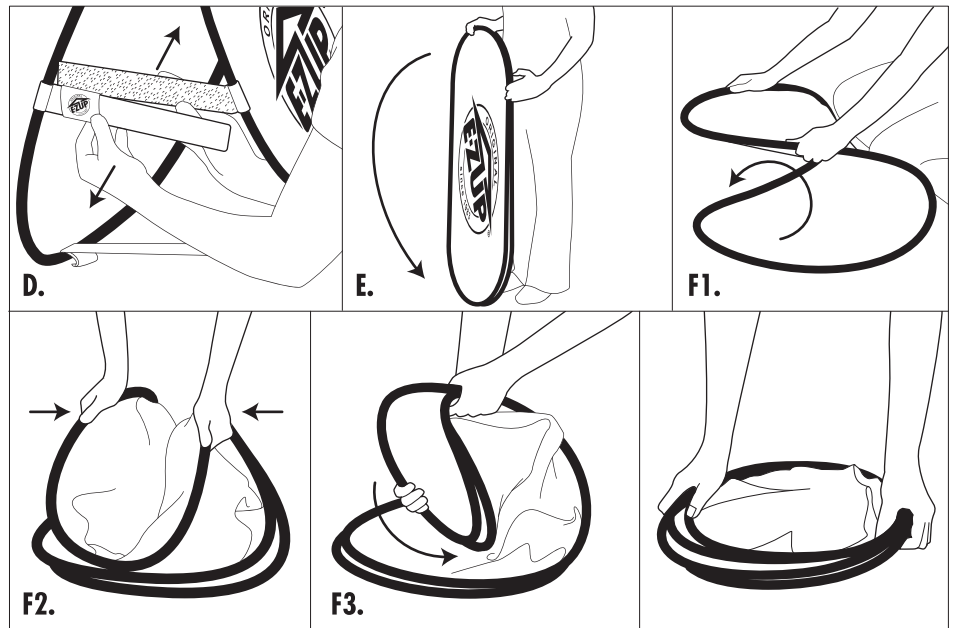


*Rotate vertical prior to folding

F. (F1.) Lay the bottom of the banner on the floor and fold the banner in half. (F2.) While holding the edges, bring the top portion of the banner in on the sides to meet in the middle.

(F3.) Adjust your hands as shown, fold it down and then tuck the top portion under itself until it fits snugly onto the bottom portion.

Return the banner to the Storage Bag for easy transportation and safe keeping.



The #1 Instant Shelter® Brand in the World

INTERNATIONAL E-Z UP, INC.
1900 Second St. Norco, California 92860

800-45-SHADE

ezup.com